

# National Reform and Partnerships

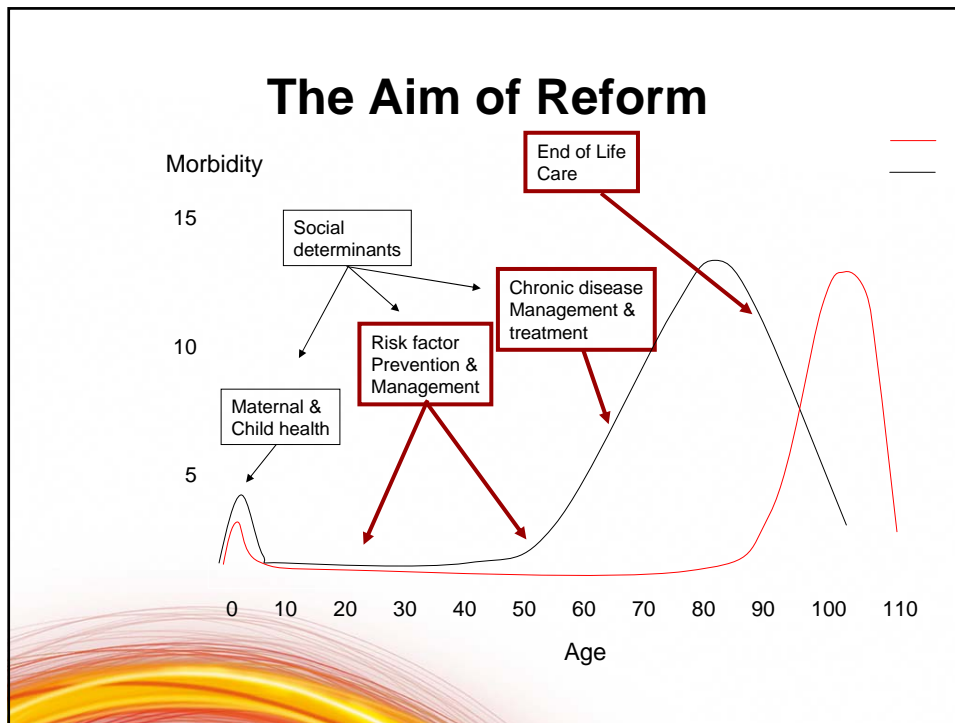
GPQ Forum, Brisbane – 6 March 2009

Professor Hal Swerissen  
Dean, Faculty of Health Sciences  
Pro Vice Chancellor (Regional)  
La Trobe University



## National Reform Agenda

- COAG
- National Health and Hospital Reform Commission
- Primary Health Care Strategy
- Other (eg. prevention task force)



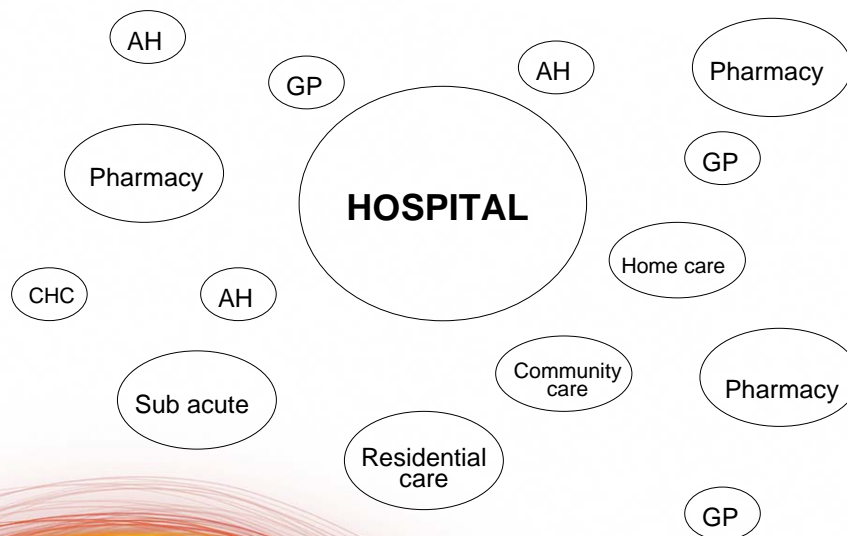
## COAG – Health & Ageing (Nov 08)

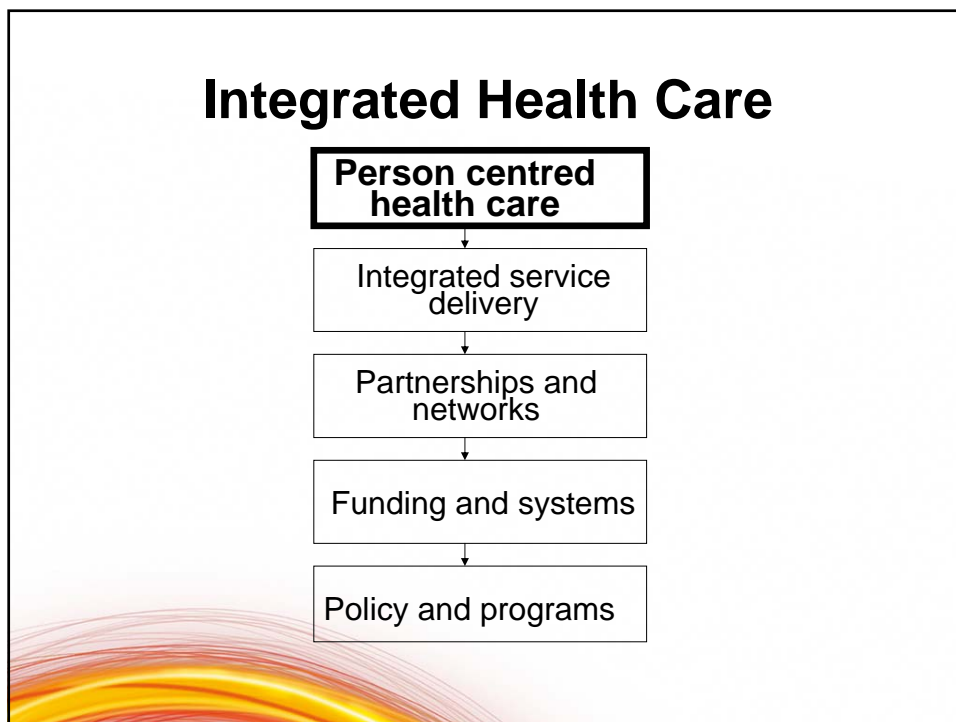
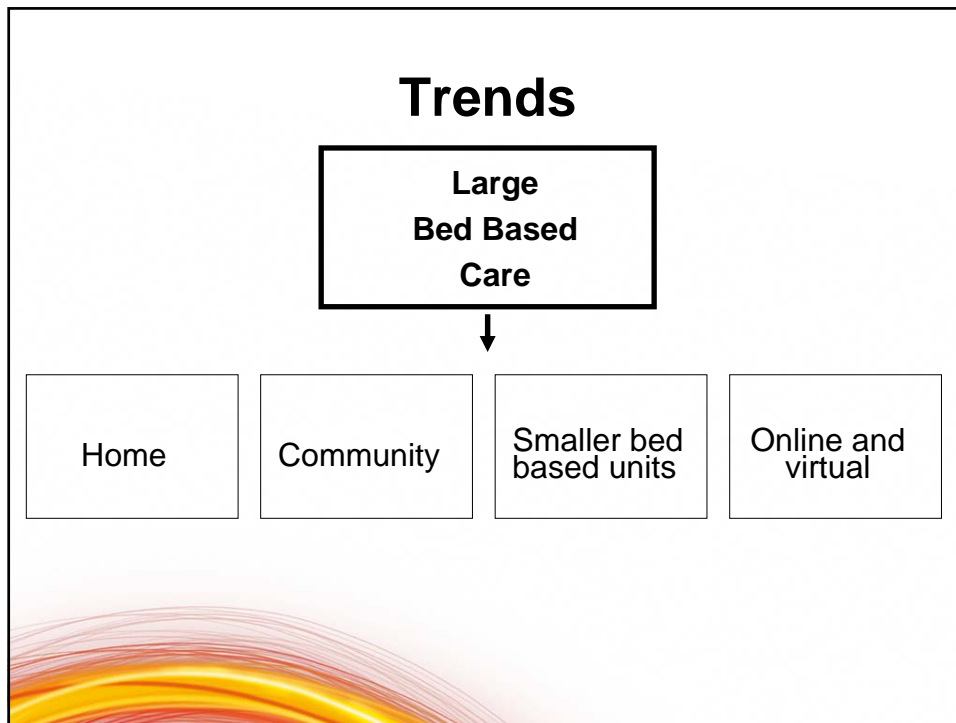
- Financial commitment over 5 years (hospitals)
- Health workforce
- National objectives and outcomes
- Health prevention
- National partnerships
  - Prevention
  - Indigenous health
- E health

## NHHRC Proposals


- Taking responsibility
- Connecting care
- Facing inequities
- Driving quality performance

## Primary Care ?




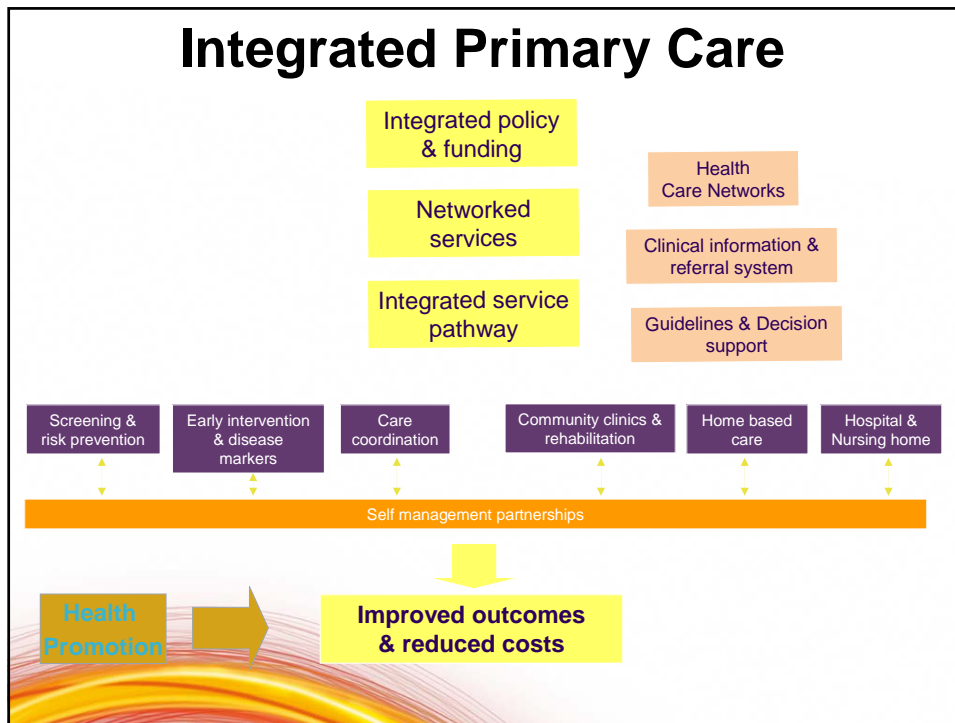


## **Population Groups and reworked services**

- Prevention
  - 'Simple' (one modality) primary care
  - Acute, sub acute and post acute care
  - Chronic and complex care
- 

## **NHHRC – Primary care**

- Commonwealth responsibilities
  - Comprehensive primary health care centres
  - Chronic and complex condition enrolment
  - Performance outcomes
  - Shared care arrangements
  - Discussions of primary health care
  - Extended scope and practice
- 



## Organisational options

- Vertically integrated organisations  
(eg. Area Health authorities)
- Network organisations  
(eg. Primary care trusts)
- Capacity building organisations  
(eg. Divisions of general practices)

NB: Area based or enrolment based

## Primary Care Network Organisations

- Independent practices and agencies
- Common systems for referral, care planning, communications etc.
- Agreed practice guidelines
- Integrated planning, co-ordination, commissioning, performance management and capacity building for population
- Agreements with acute, sub acute, residential and providers

## Next steps

- Build on existing organisational structures
- Systems development/e health, referrals, guidelines), development planning
- Funding/commissioning for specific areas (eg chronic and complex conditions)
- Develop divisional/area based reporting, accountability and incentives

