



CHIC

represents a proactive approach to establishing genuine partnerships, to improve integration and service coordination and potentially increase the capacity of the primary health care system.



Scope

The joint service delivery priorities for each Partnership Council will address:

- chronic and complex care
- integrated health promotion and illness prevention
- early childhood health (incl. ante and post natal care)
- community mental health
- drug and alcohol services



Membership

- General Practitioners, community health, domiciliary nursing groups, Divisions, AMS, allied health and other non-government health service providers.
- range and level of involvement of partners will be voluntary and determined by consensus at the local level.



- \$34 M to June 2011
- 17 Partnership Councils proposed
- \$120k p.a. each to June 2011 for Partnering
- \$10k- \$650k p.a. each to June 2011 for Service Delivery and Innovation



Collaboration and integration cannot be achieved by doing “business as usual.”

We are not able to control the process through traditional governance mechanisms.



Allow flexibility to come up with innovative systems change.

Be aware of, and comfortable with the ‘risks’ the partnerships will have to take.

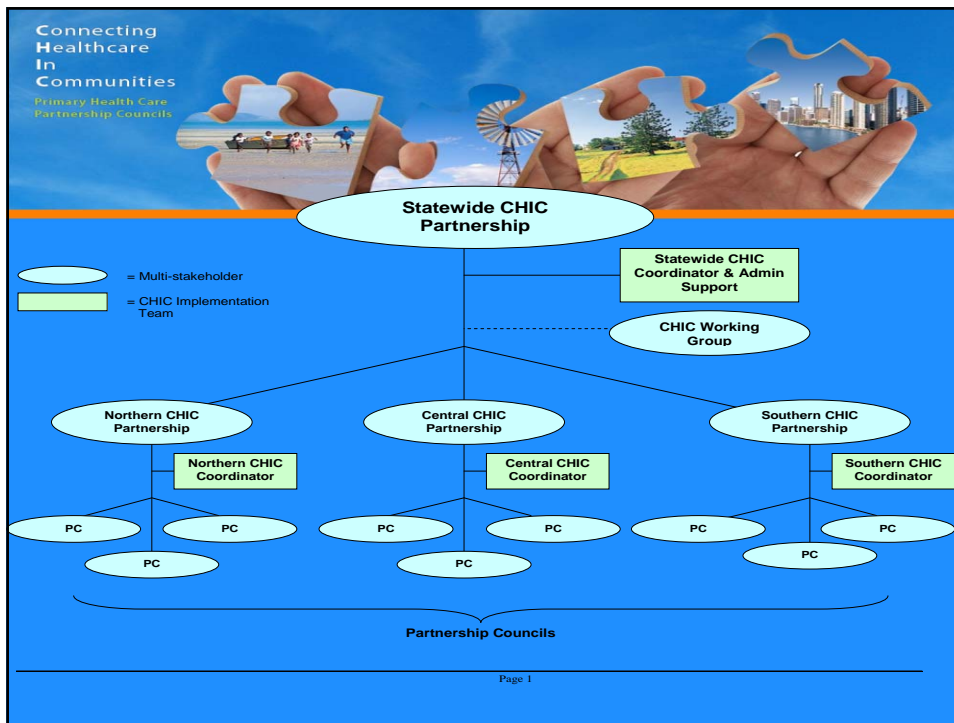


The journey entails...

- Aligning partner interests
- Achieving domain consensus
- Managing time, trust and turf issues
- Providing evidence of achievement
- Providing changes in health outcomes



- Realise new synergies between partners and identify new points of convergence as they emerge.
- Create processes in which our operating environments will allow for the innovations needed to deal with complex problems.
- Engender significant system and culture change within Queensland primary health care sector which enables partnering approaches.



Connecting Healthcare In Communities
Primary Health Care Partnership Councils

www.chicpartnerships.com.au

Statewide Coordinator	Sean Lowry 3237 1473
Northern Area Coordinator	Rosemary Schmidt 4019 6410
Central Area Coordinator	Nikki Laver 3131 6875
Southern Area Coordinator	Josephine Peat 3895 3133